

Benefits of On-Line to Success

- ◆ Gain more knowledge about your learning disability
- ◆ Build self-advocacy skills
- ◆ Develop learning strategies for post-secondary
- ◆ Discover the adaptive technology that works best for you
- ◆ Log on whenever and wherever you are!



On-Line to Success

Brought to you by:



In collaboration with:



Peterborough Victoria
Northumberland and Clarington
Catholic District School Board

Transitions can be tough!
Get a head start now
with

On-Line to Success!



✓ **Going to
College or
University**

✓ **Have a
Learning
Disability**

✓ **Interested
In Online
Learning**

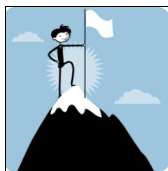
What is On-Line to Success?

On-Line to Success is a transition program for high school students with a learning disabilities in grades 11 or 12, who plan to attend any post-secondary institution for the 2012 or 2013 school year.

This 8 week, online course guides students through various activities and assignments designed to prepare students for challenges they may face in learning at the post-secondary level.

As well, the course aims to provide students with a deeper understanding of their own learning disability while helping to develop the skills and strategies needed for success.

Updated psychoeducational assessments are offered to all students who complete the course.



Who is Eligible?

- ◆ Any student with a learning disability who is planning on attending any College or University September 2012 or 2013
- ◆ Any student with a learning disability who has been accepted or is on the waiting list for any College or University

Course Schedule

There are 3 components to the course:

Opening Days– March 21 & 22, 2012

Students attend full day course overview and orientation sessions at Queen's University Faculty of Education, Kingston (Duncan McArthur College)

On-Line Modules-March 21-May 9, 2012

Students complete the online course work. The course consists of 5 modules to work through in the 8 weeks. It is expected to take 48 hours to complete

Closing Day-May 9, 2012

Students attend a full day of information sessions, workshops, student presentations and course wrap-up at Queen's University, Kingston.

Complimentary meals and snacks will be provided for the on campus sessions.

Cost?

There is no cost for this course. Students must simply have a valid email address, and access to the internet for the period of the course.

Psychoeducational Assessments

Updated psychoeducational assessments are offered to all students who complete the course. An updated assessment is necessary in order to receive accommodations at most post-secondary institutions. The fee for assessment is based on parental income unless the student qualifies for OSAP, in which case the fee will be covered in full.

Registration

Please send registration package by:

MONDAY FEBRUARY 20th, 2012

Please send registration package to:

Claire Notman

Regional Assessment & Resource Centre

Mackintosh Corry Hall, Suite B100

68 University Ave,

Kingston, ON

K7L 3N6

For more information contact:

Claire Notman (RARC)

Acting On-Line to Success Coordinator

Email: olts@queensu.ca

Phone: 613-533-6000 ext 75220

Fax: 613-533-6564

